

# SNOWCONE MACHINE

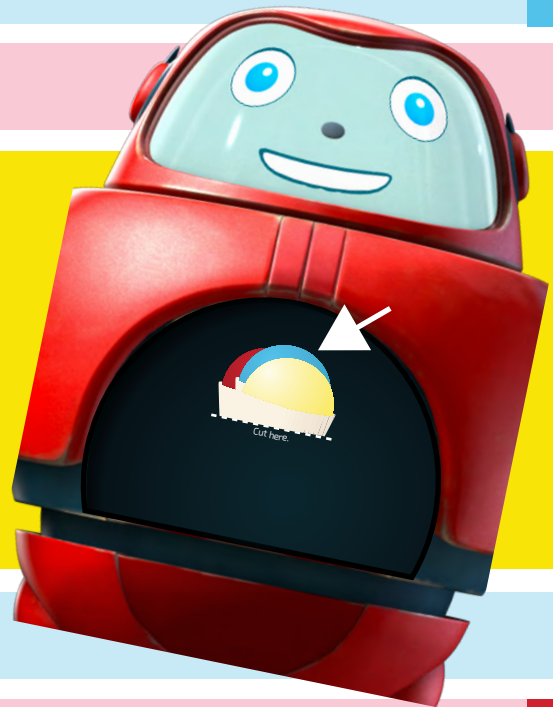


## You'll need:

- Gizmo's Snow Cone Machine Pattern
- Scissors
- Tape

**Cut** the pieces from the Gizmo's Snow Cone Pattern.

**Place** the snow cones in the slit, which is located in Gizmo's compartment.



**Tape** the compartment door at the bottom so it acts as a hinge for the door. Fold the door over a couple of times if needed. This will allow for easier motion.